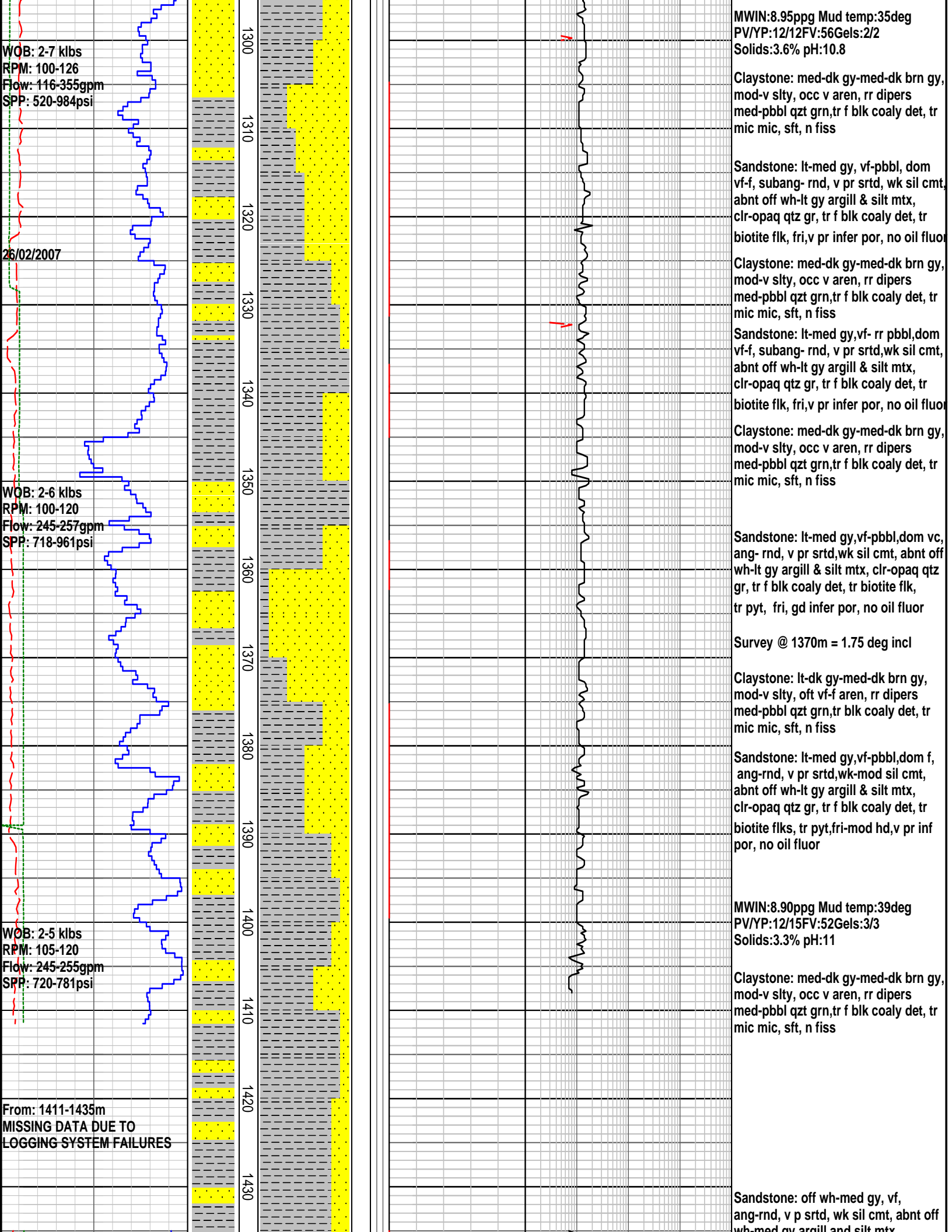
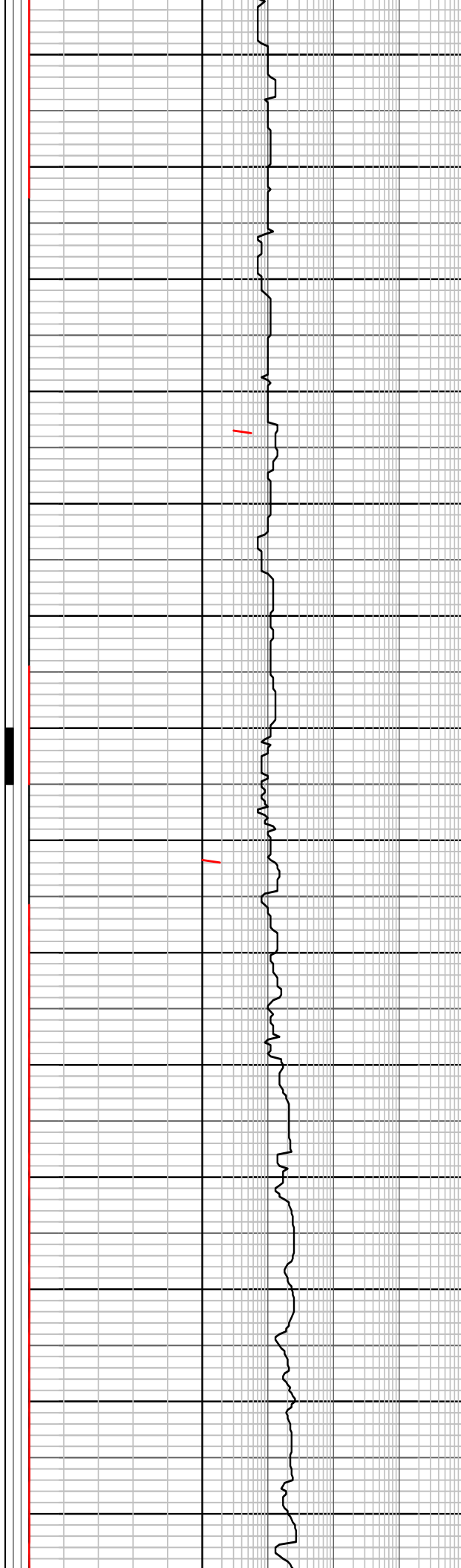
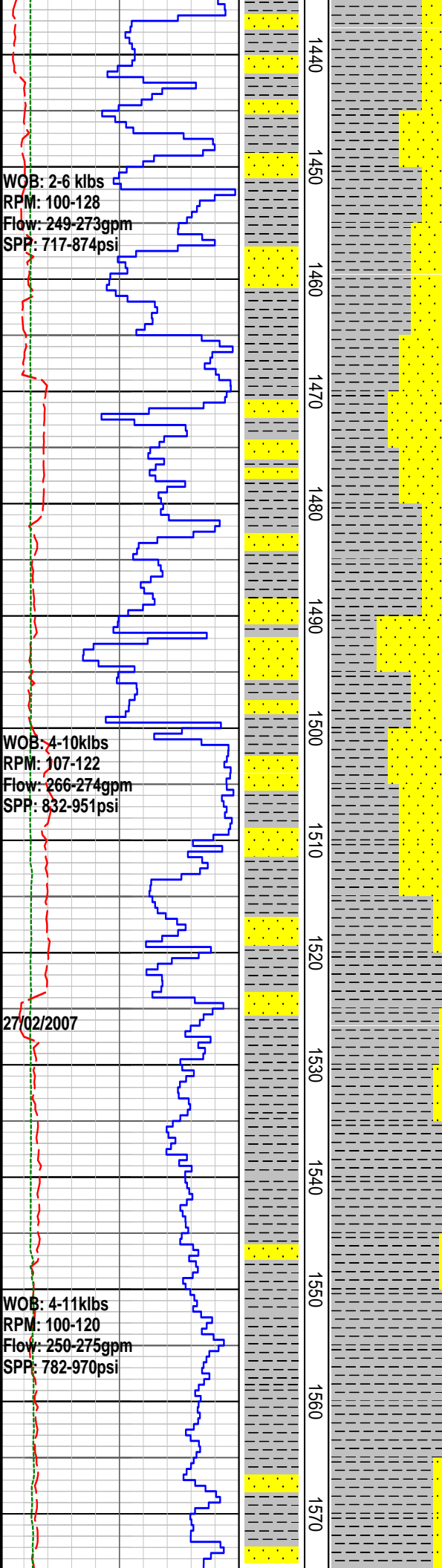


FORMATION EVALUATION LOG

RATE OF PENETRATION ROP (0-100m/hr) Backup ROP (100-200m/hr) WOB (klb) TORQUE AVG	INTERPRETED LITHOLOGY	MD meters 1:500	LITHOLOGY	CORE	OIL SHOWS	TOTAL GAS 0.1 0.2 0.3 0.4 0.5 %	CHROMATOGRAPH				REMARKS
							1	Methane ppm	10000	1	
							1	Ethane ppm	10000	1	
							1	Propane ppm	10000	1	
							1	iso-Butane ppm	10000	1	
							1	n-Butane ppm	10000	1	
							1	iso-Pentane ppm	10000	1	
								n-Pentane ppm			
							10	100	1000	10000	
WOB: 2-5 klbs RPM: 85-123 Flow: 250-255gpm SPP: 599-680psi		00									Claystone: med gy-med brn gy, tr med brn, mod-v slty, often vf-f aren, tr f blk coaly det, tr pyr, tr micmic, sft, n fiss
		1210									
		1220									Sandstone: ltgy-lt brngy, vf, subang-subrnd, mod srtd, wk sil cmt, abnt off wh-lt gy argill and silt mtx, clr-opaq qtz gr, tr f blk coaly det, tr pyr, fri por vis por, n o fluor
		1230									Survey @ 1233m = 1.75 deg incl
WOB: 4-6 klbs RPM: 103-120 Flow: 250-253gpm SPP: 628-914psi		1240									Claystone: med-dk gy-med-dk brn gy-dk grn gy, mod-v slty, often v f-f aren, tr f blk coaly det, tr pyr, tr mic mic, sft, n fiss
24/02/2007 25/02/2007 Bit#3RR1: MCP662 6.75" Core PDC TFA 0.5522 Depth in 1245m, out:1246m 1.0m/1.4hrs Grading:0-0-NO-A-X-I-NO-HP		1250									Core#2 Cut 1245m-1246m Recovery 0.0m=0%
Bit#3RR2: MCP662 6.75" Core PDC TFA 0.5522 Depth in 1246m, out:1270m 24m/9.7hrs Grading:0-0-NO-A-X-I-NO-HP		1260									Core#3 Cut 1246m-12470m Recovery 8.13m=34%
2RR2: 6-3/4" M56S PDC Jets: 5 x 12, In: 1246m, Out: 1270m Drilled:m in XX.Xhrs Bit Grade: X-X-XX-X-X-XX-XX		1270									Claystone: med-dk gy-med-dk brn gy-dk grn gy, mod-v slty, often v f-f aren, tr f blk coaly det, tr pyr, tr mic mic, sft, n fiss
		1280									Sandstone: ltgy-lt brngy, vf-f, dom vf,abdn med-vc gr,subang-subrnd, mod srtd, wk sil cmt, abnt off wh-lt gy argill & silt mtx, clr-opaq qtz gr, tr f blk coaly det, tr pyr, fri,pr vis por, no oil fluor
		1290									Sandstone: lt-med gy, vf-pbbl, dom vc, subang-subrnd, v pr srtd, wk sil cmt, abnt off wh-lt gy argill & silt mtx, clr-opaq qtz gr, tr f blk coaly det, tr pyt, fri,pr vis por, n oil fluor





wh-med gy argill and silt mtx,
clr-opaq qtz gr, tr blk coaly det, tr pyr,
fri, v p infer por, n o fluor

Claystone: lt-dk gy-med -brngy,
mod-v slty, often v f aren,rr med-peb
rnd qtz gr, tr blk coaly det, tr pyr, tr
micmic, frm, non fiss

Survey @ 1467m = 2.00 deg incl

Sandstone: lt-med gy,vf-pbbl,dom f,
ang-rnd, v pr srtd,wk-mod sil cmt,
abnt off wh-lt gy argill & silt mtx,
clr-opaq qtz gr, tr f blk coaly det, tr
tr pyt, fri, v pr infer por, no oil fluor

Claystone: med-dk gy-med-dk brn gy,
mod-v slty, occ v aren, rr dipers
med-pbbl qzt grn,tr f blk coaly det, tr
mic mic, sft, n fiss

Sandstone: off wh-lt gy, vf-rr f, tr disp
med- vc gr, ang-rnd, p srtd, wk sil
cmt, abnt off wh argill mtx, clr-opq qtz
gr, abnt alt felds gr, tr blk coal det, fri,
p infer por.

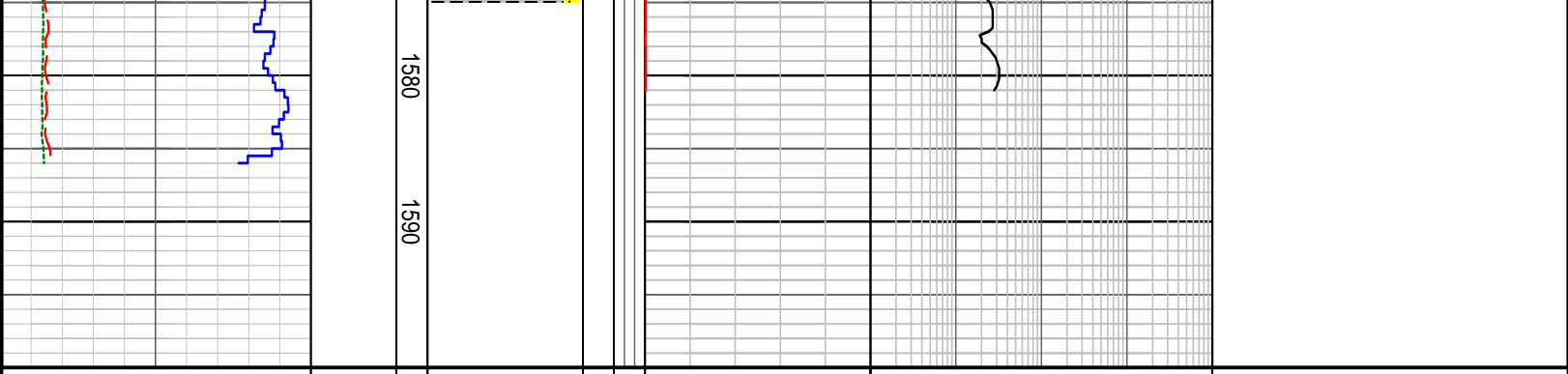
Fluorescence: the sandstone has 20%
mod bri patchy v pl yell wh fluor
giving a wk milky wh crsh cut, thin
ring res.
MWIN:8.90ppg Mud temp:42deg
PV/YP:12/17FV:50Gels:3/3
Solids:3.2% pH:11

Claystone: med-dk gy-med-dk brn gy,
mod-v slty, vf arena w qzt & alt feld
grn,tr f blk coaly det, tr mic mic, frm, n
fiss

Sandstone: off wh-lt gy, vf-rr f,
ang-rnd, pr srtd, wk sil cmt, abnt off
wh argill mtx, clr-opq qtz gr, abnt alt
felds gr, tr blk coal det, fri, v pr infer
por, no oil fluor

Claystone: lt-dk gy-med brn gy-dk gy,
v slty i/p, occ abdn vf qzt & alt feld
grn, tr blk coaly det, com bk carb flk,
tr med brn cryptocrystalline dol, tr
mic, frm, sl sbfiss

Claystone: lt-dk gy-med brn gy-dk gy,
v slty i/p, occ abdn vf qzt & alt feld
grn, tr blk coaly det, com bk carb flk,
tr med brn cryptocrystalline dol, tr
mic, frm, sl sbfiss



FORMATION EVALUATION LOG

RATE OF PENETRATION										REMARKS
ROP (0-100m/hr)										
100	90	80	70	60	50	40	30	20	10	
Backup ROP (100-200m/hr)										
200	190	180	170	160	150	140	130	120	110	
WOB (klb)										
5	10	15	20	25	30	35	40	45	50	
TORQUE AVG										
5	10	15	20	25	30	35	40	45	50	
INTERPRETED LITHOLOGY										
MD meters 1:500										
LITHOLOGY										
CORE										
OIL SHOWS										
TOTAL GAS										
TOTAL GAS										
0.1 0.2 0.3 0.4 0.5 %										
CHROMATOGRAPH										
1 Methane ppm 10000										
1 Ethane ppm 10000										
1 Propane ppm 10000										
1 iso-Butane ppm 10000										
1 n-Butane ppm 10000										
1 iso-Pentane ppm 10000										
n-Pentane ppm										
10 100 1000 10000										